



 **3 bedroom**

 **1 bathroom**

 **95m² floor plan**

 **13.9m x 7.9m**



Ideal as a first home with room for growing families this home has plenty of options for adding character.

Featuring 3 bedrooms, separate laundry and a unique exterior design.

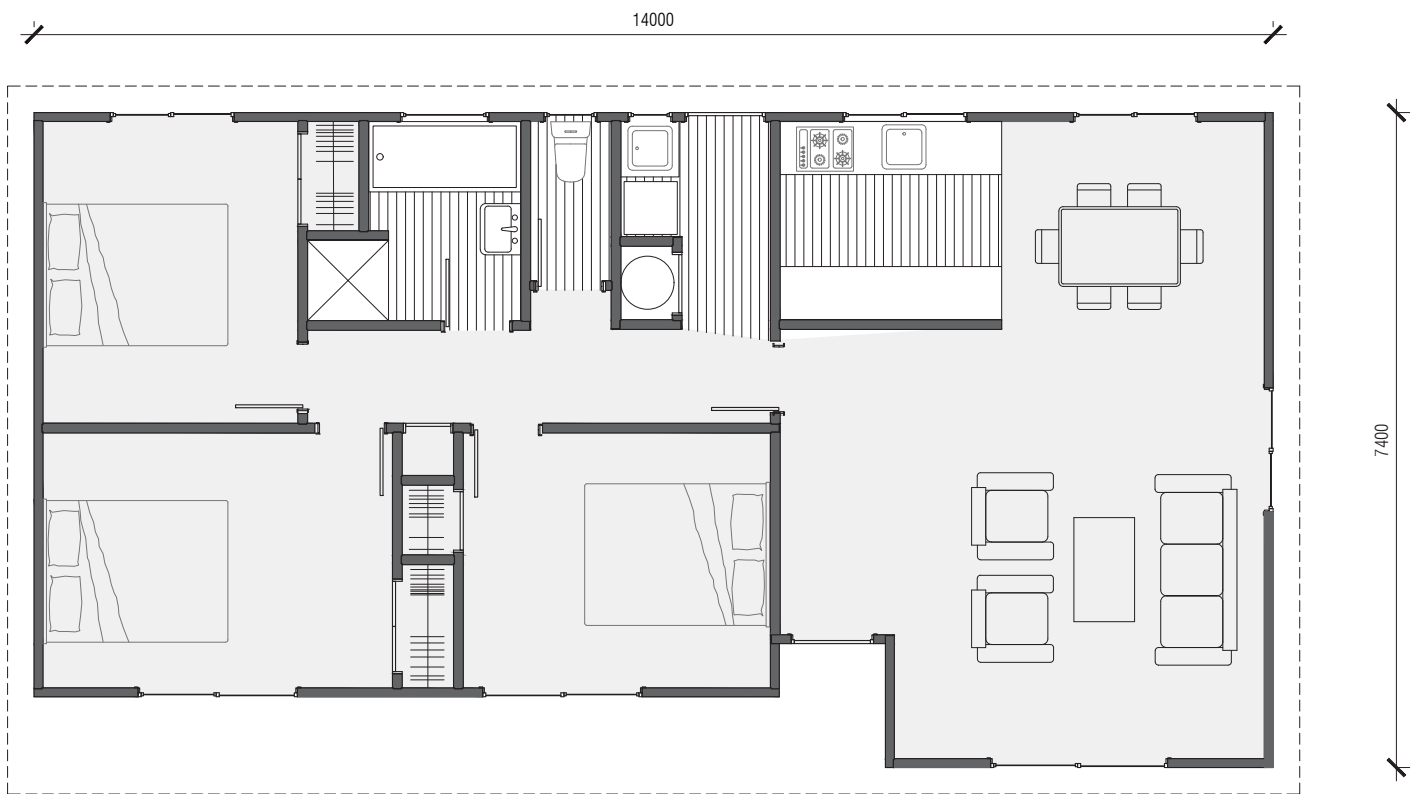
**Peace of mind guaranteed with our
10 YEAR STRUCTURAL WARRANTY**

When you invest in an Ezyline Home, you're investing in lasting quality and peace of mind. That's why we proudly offer a 10 year structural warranty as our commitment to excellence in both materials and workmanship.

This warranty covers the structural integrity of your home, including the sub floor, framing, roof structure and load-bearing elements. It's our promise to you that your home has been built to last, using high-quality materials and crafted by experienced professionals who take pride in their work.

Enjoy total confidence in the strength and durability of your home, backed by a decade of protection. Because your peace of mind is as important to us as the home we build for you.





What you get

When you buy an Ezyline home you can be assured you are getting a solid home, built using conventional, traditional building techniques. All Ezyline homes are built by qualified tradespeople using the best quality materials from trusted suppliers. We pride ourselves on providing our customers with high-quality, low-cost homes which meet and exceed all requirements of The New Zealand Building Code, as well as the new H1 Insulation requirements meaning you can relax with the peace of mind that your new Ezyline home is warm, well insulated, and built to last. Your Ezyline Home will arrive onsite with a full building consent Code Compliance Certificate (CCC), and our 10 year structural warranty, built and backed by a business that has been operating for close to 2 decades.

Ezyline Homes is passionate about building real homes for real people.



Contact our team today to start your transportable home journey

0800 EZYLINE (399 546)

info@ezylinehomes.co.nz

ezylinehomes.co.nz