

Plans Catalogue



Plans Catalogue

CONTENTS

03 1 Bedroom, 1 Bathroom Plans

05 2 Bedroom, 1 Bathroom Plans

13 3 Bedroom, 1 Bathroom Plans

20 3 Bedroom, 2 Bathroom Plans

30 4 Bedroom, 1 Bathroom Plans

33 4 Bedroom, 2 Bathroom Plans





1 Bedroom, 1 Bathroom



1 bedroom



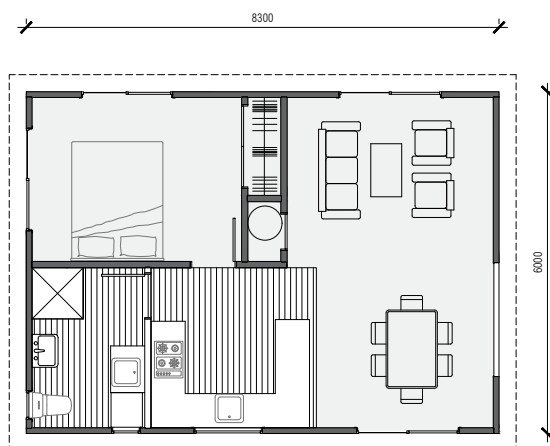
1 bathroom



50m² floor plan



8.3m x 6.0m



A spacious self contained home ideal for a granny flat or holiday home. Not a tiny home but definitely petite.

Featuring 1 bedroom and a generous bathroom with room for a washing machine.





2 Bedroom, 1 Bathroom

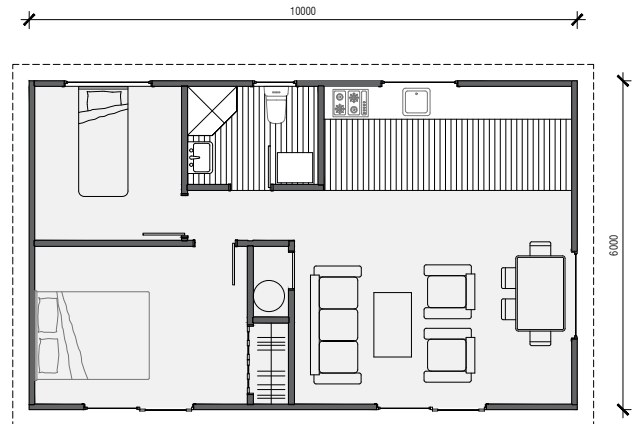


 **2 bedroom**

 **1 bathroom**

 **60m² floor plan**

 **10.0m x 6.0m**



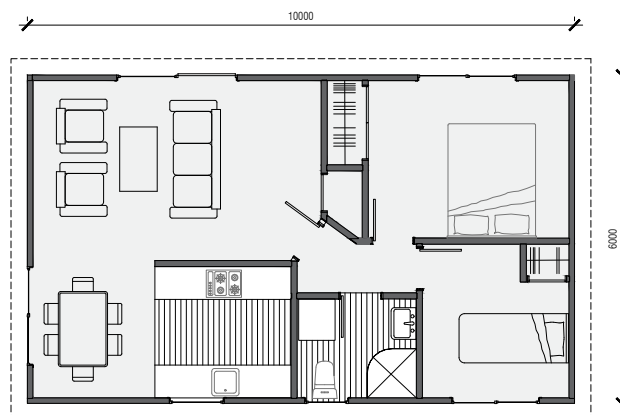
Compact, affordable and specifically designed to feel spacious inside. This home is ideal as a secondary dwelling in most councils throughout New Zealand.

Featuring 2 bedrooms, and a bathroom/laundry combination.





2 bedroom 1 bathroom 60m² floor plan 10.0m x 6.0m



A lovely compact home very suitable as a first home or beach retreat. Added bonus of plenty of room for guests to stay.

Featuring 2 bedrooms and a bathroom with space for a washing machine.



2 bedroom



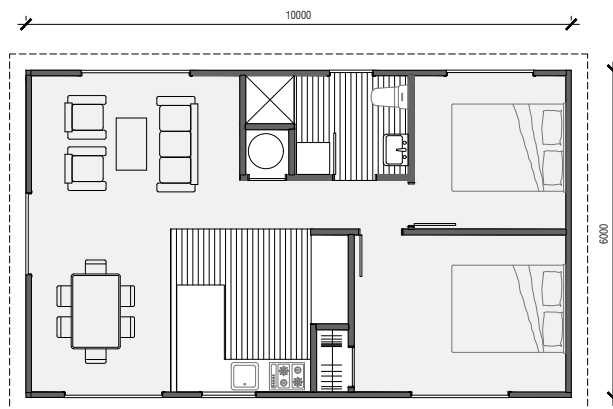
1 bathroom



60m² floor plan



10.0m x 6.0m



Designed to feel bigger than it is. This compact and affordable home has everything you need.

Featuring 2 bedrooms and an open plan kitchen, living, dining area.





2 bedroom



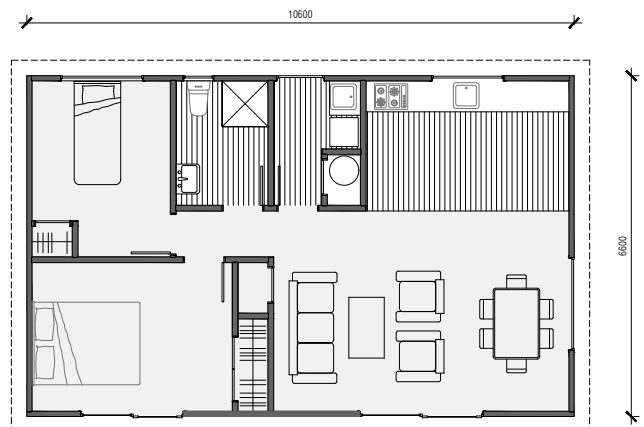
1 bathroom



70m² floor plan



10.6m x 6.6m



This beautiful home boasts a modern look and a spacious layout. Ideal as a more modestly sized home for those wishing to downsize, or a beach bach.

Featuring 2 bedrooms and a separate laundry area.



2 bedroom



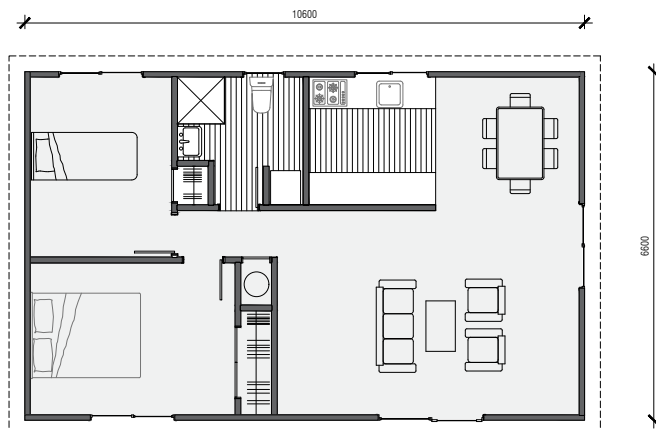
1 bathroom



70m² floor plan



10.6m x 6.6m



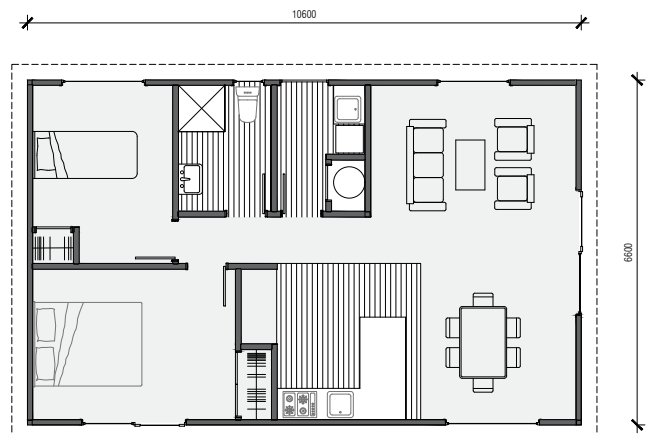
This mid sized home willl amaze you at how large it feels. This home is perfect for a smaller site or rental.

Featuring 2 bedrooms and a galley style kitchen with a generous living/dining area.





 **2 bedroom**  **1 bathroom**  **70m² floor plan**  **10.6m x 6.6m**



A well sized home, perfect for smaller sites as a rental or a secondary dwelling.

Featuring 2 bedrooms and a separate laundry area with an exterior door.



2 bedroom



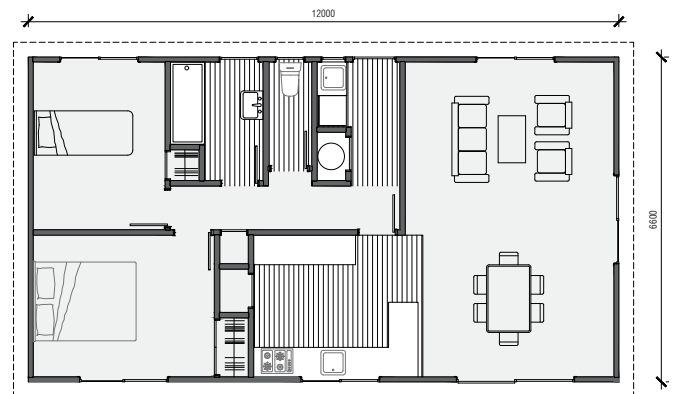
1 bathroom



80m² floor plan



12.0m x 6.6m



Roomy 2 bedroom home with loads of space for friends and family.

Featuring 2 bedrooms and a galley style kitchen with large pantry.





2 bedroom



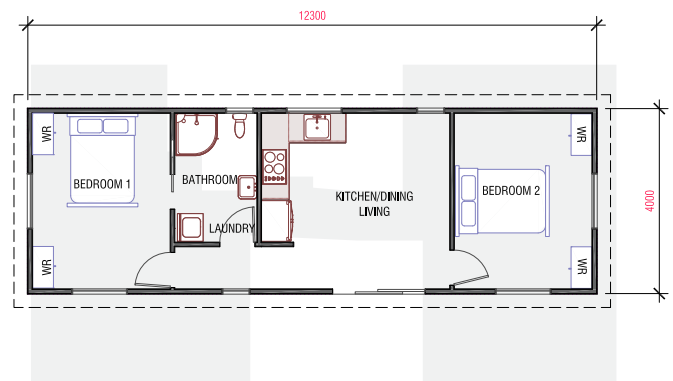
1 bathroom



50m² floor plan



12.3m x 4m



Contemporary look, 2 bedroom home specifically designed for sections with tight spaces.

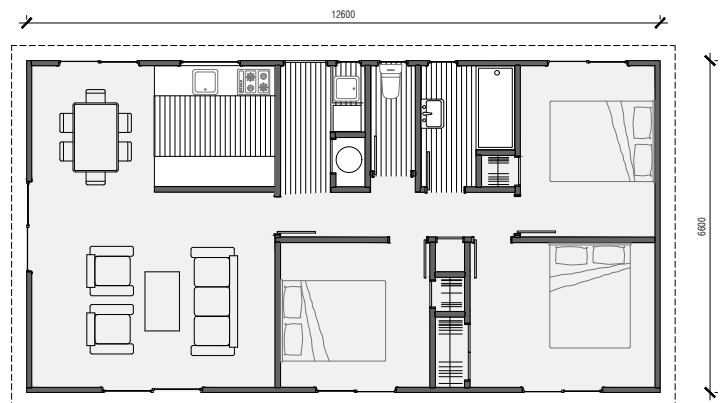
Featuring 2 bedrooms, 1 bathroom, with access from the master bedroom and open plan living.



3 Bedroom, 1 Bathroom



3 bedroom 1 bathroom 84m² floor plan 12.0m x 6.6m



Ideal for a first time home, rental or a holiday getaway.
Modest size 3 bedroom home specific for smaller sites.

Featuring 3 bedrooms and a good sized bathroom with
separate toilet.



3 bedroom



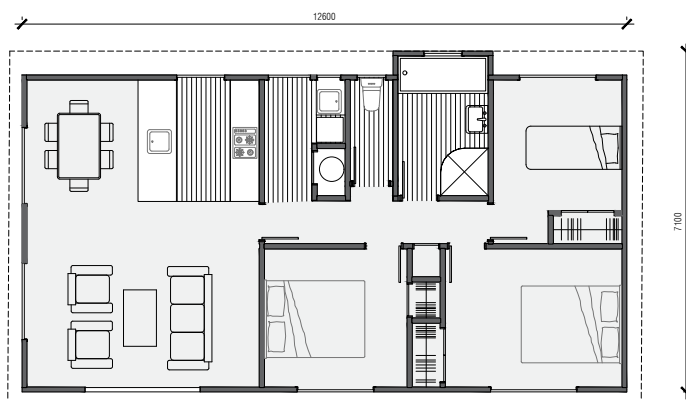
1 bathroom



84m² floor plan



12.6m x 6.6m



Perfect for customising. Choose a hip or gable roof.
Add decks and pergolas to show your individual style.

Featuring 3 bedrooms and an awesome kitchen, dining,
living space.





3 bedroom



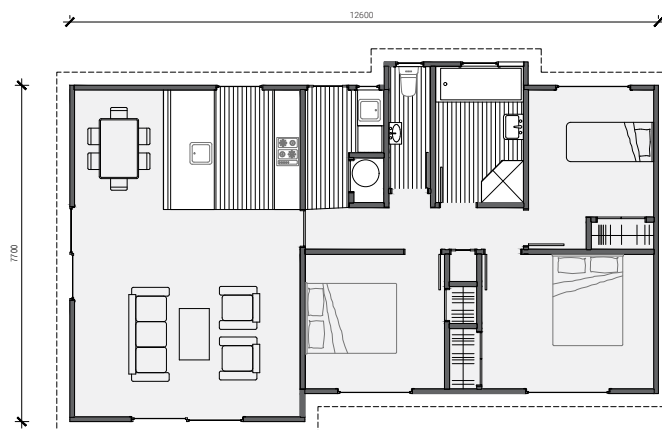
1 bathroom



87m² floor plan



12.6m x 7.7m



This comfortable, modern home uses space very cleverly. It is ideally suited to use as a first home, rental or bach.

Featuring 3 bedrooms as well as separate toilet and laundry areas. This home also features a lovely breakfast bar style kitchen.



3 bedroom



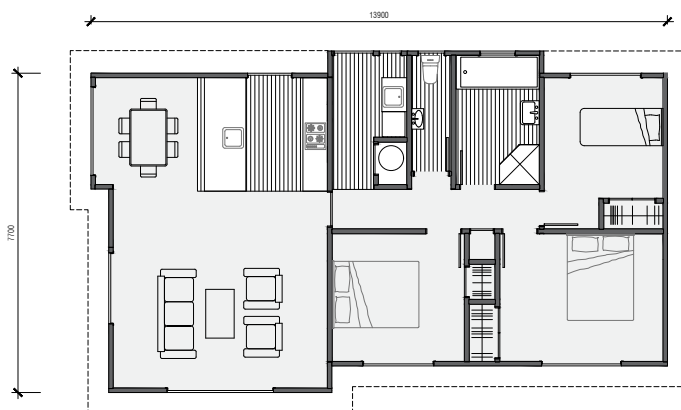
1 bathroom



89m² floor plan



13.0m x 7.7m



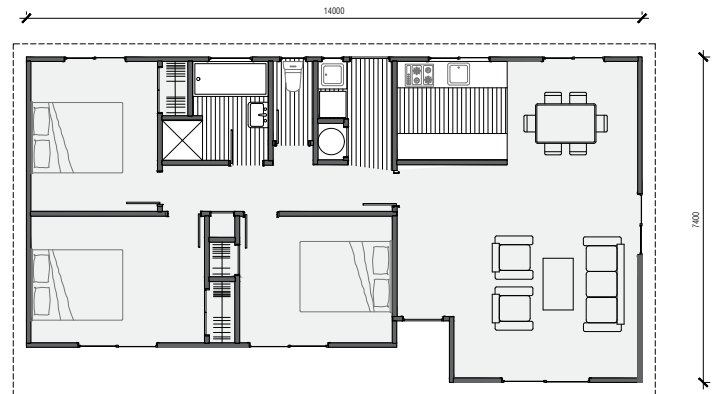
This beautifully designed home shows off a lovely double pitch roof and is ideal for the growing family.

Featuring 3 bedrooms as well as separate toilet and laundry areas. This home also features a lovely breakfast bar style kitchen.





 **3 bedroom**  **1 bathroom**  **95m² floor plan**  **13.9m x 7.9m**



Ideal as a first home with room for growing families, this home has plenty of options for adding character.

Featuring 3 bedrooms, separate laundry and a unique exterior design.



3 bedroom



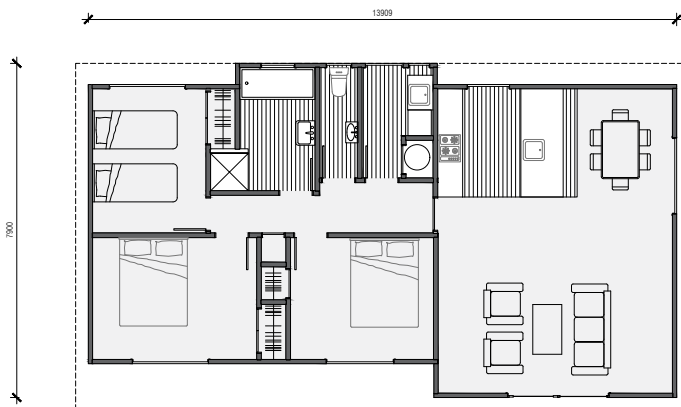
1 bathroom



96m² floor plan



13.9m x 7.9m



Roomy 3 bedroom home with sleek modern styling has lots of space for the growing family.

Featuring 3 bedrooms, 1 bathroom and a breakfast bar style kitchen.





3 Bedroom, 2 Bathroom



3 bedroom



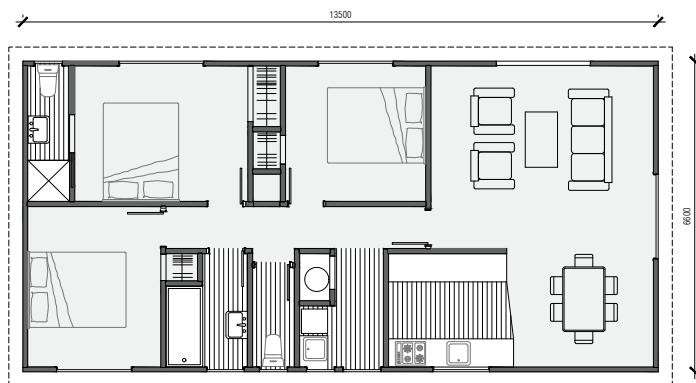
2 bathroom



90m² floor plan



13.5m x 6.6m



An affordable, low maintenance home built for modern living. Everything you need and then some.

Featuring 3 bedrooms with an ensuite off the master bedroom.





3 bedroom



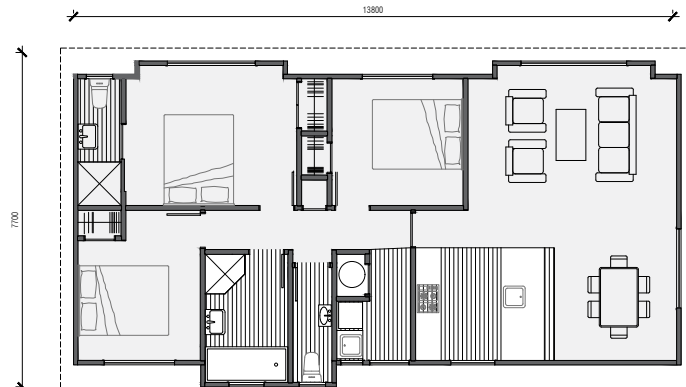
2 bathroom



93m² floor plan



13.8m x 7.7m

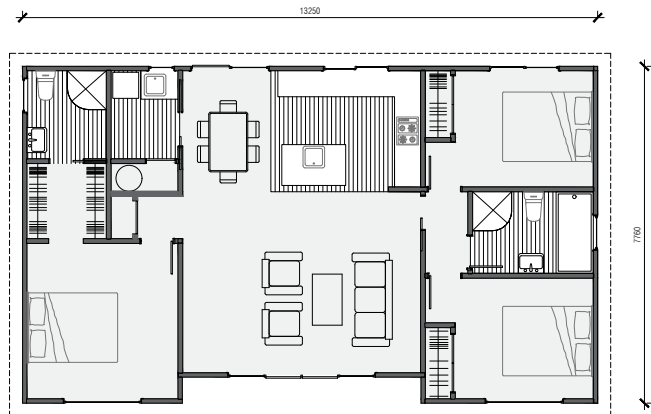


A stunning, modern, monopitch roof, 3 bedroom family home perfect for your piece of land.

Featuring 3 bedrooms, an ensuite off the master bedroom and a very spacious open plan living, dining, kitchen area.



3 bedroom **2 bathroom** **98m² floor plan** **13.2m x 7.7m**



This fabulous design makes a great family home or superb bach.

Featuring 3 bedrooms, a massive central living area and a walk in wardrobe through to an ensuite.





3 bedroom



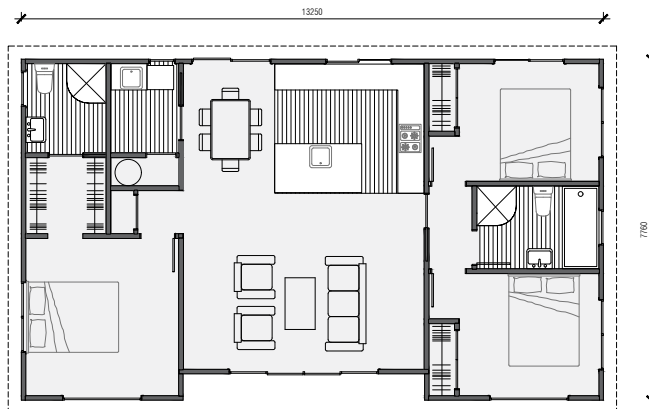
2 bathroom



100m² floor plan



13.2m x 7.7m

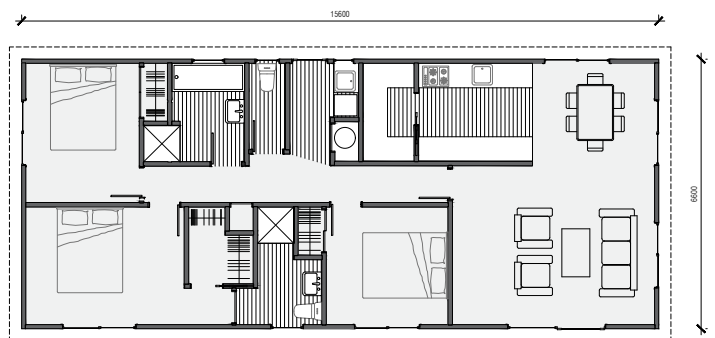


Beautiful contemporary, mono pitch roof home with an amazing central living area.

Featuring 3 bedrooms, walk in wardrobe and ensuite off the master bedroom.



3 bedroom **2 bathroom** **103m² floor plan** **15.6m x 6.6m**



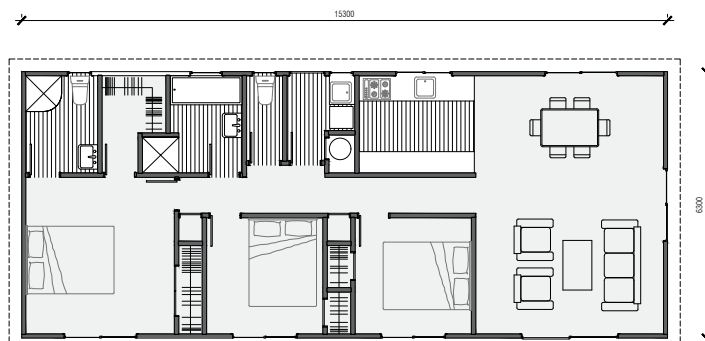
Clean design lines and separate bathrooms. This home is a solid and practical large home for big families.

Featuring 3 bedrooms, a walk in wardrobe, an ensuite and an awesome walk in pantry in the kitchen.





3 bedroom 2 bathroom 105m² floor plan 16.0m x 6.6m

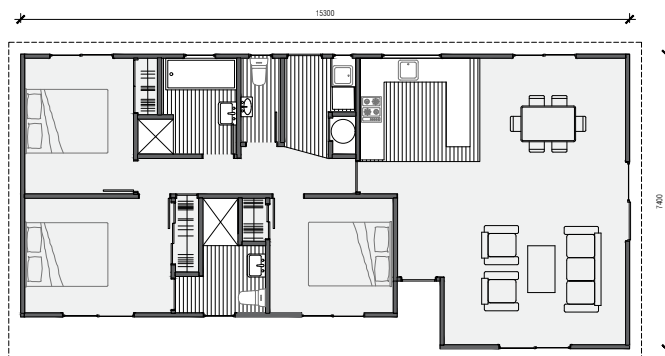


A larger home with more generous proportions.
Excellent for large families.

Featuring 3 bedrooms, galley kitchen a walk in wardrobe
and a generous ensuite.



3 bedroom **2 bathroom** **106m² floor plan** **15.3m x 7.4m**



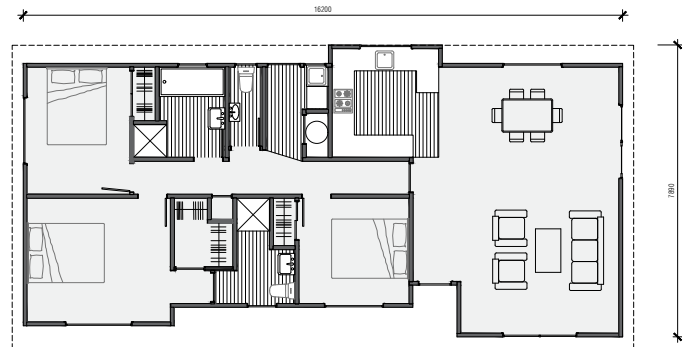
A larger home with more generous proportions and great exterior lines. Excellent for large families.

Featuring 3 bedrooms, a large master bedroom with ensuite and a large lounge/dining area.





3 bedroom 2 bathroom 110m² floor plan 16.2m x 7.9m

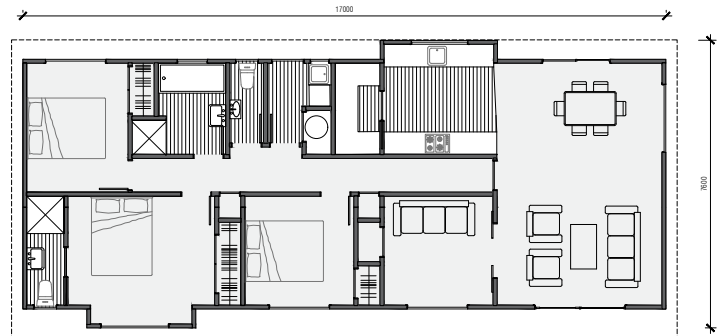


Large footprint, contemporary, mono pitch roof home with excellent open plan kitchen/dining/living area.

Featuring 3 bedrooms, walk in wardrobe and ensuite off the master bedroom.



 **3 bedroom**  **2 bathroom**  **115m² floor plan**  **17.0m x 7.6m**



Gorgeous 3 bedroom home with a media room that could be a 4th Bedroom.

Featuring 3 bedrooms, media room, walk in wardrobe and ensuite off the master bedroom.





4 Bedroom, 1 Bathroom



4 bedroom



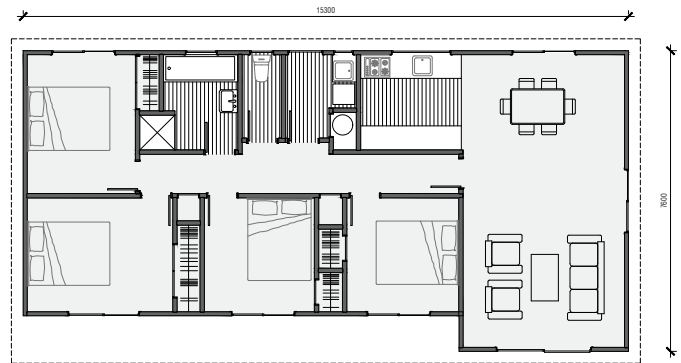
1 bathroom



105m² floor plan



15.3m x 7.6m



Large footprint home designed for a large family or those who may need space and a home office.

Featuring 4 bedrooms, a galley kitchen and a spacious living/dining area.





4 bedroom



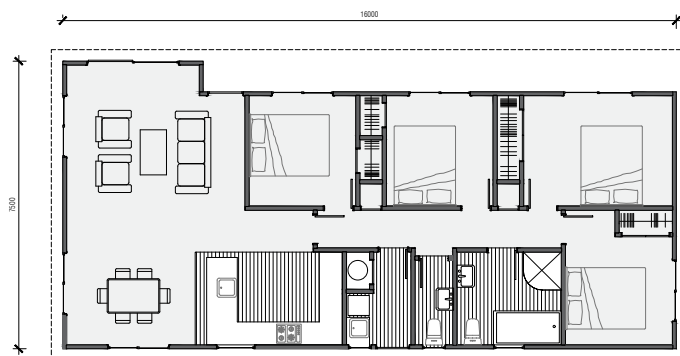
1 bathroom



111m² floor plan



16.0m x 7.5m



The largest of the traditional series. Space for everyone with generously proportioned bathroom, bedrooms and kitchen, lounge, dining area.

Featuring 4 big bedrooms and a large bathroom as well as substantial open plan kitchen, lounge, dining area.



4 Bedroom, 2 Bathroom



4 bedroom



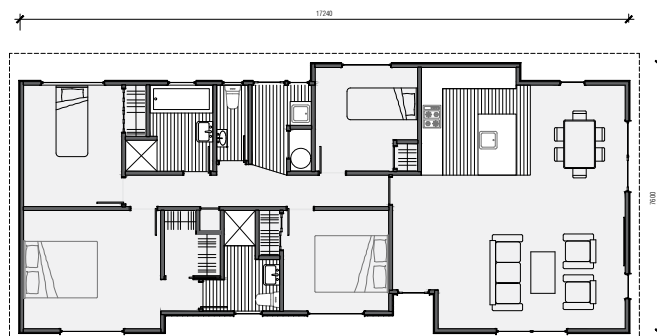
2 bathroom



120m² floor plan



17.4m x 7.6m



Massive mono pitch home with room for a large family.

Featuring 4 generous size bedrooms, walk in wardrobe and ensuite off the master bedroom.



